

## Discover which viability dyes are right for you.

### Amine-reactive dyes

#### Ghost Dyes™

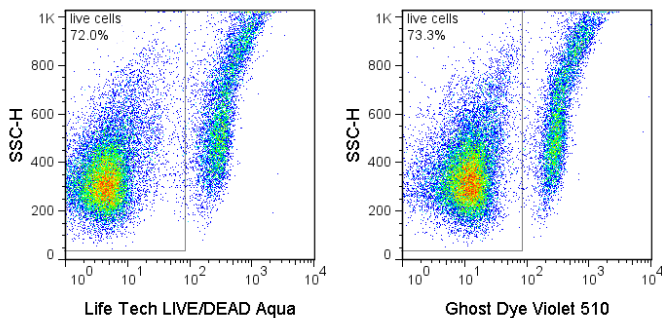
- Ready-to-use format
- Easy to incorporate into staining protocols
- Resistant to subsequent washing, fixation, and permeabilization

	Excitation(nm)	Emission(nm)	Cat. No.
Ghost Dye™ UV 450	355	450	13-0868
Ghost Dye™ Violet 450	405	450	13-0863
Ghost Dye™ Violet 510	405	510	13-0870
Ghost Dye™ Violet 540	405	537	13-0879
Ghost Dye™ Blue 516	488	516	13-0867
Ghost Dye™ Red 710	633-647	710	13-0871
Ghost Dye™ Red 780	633	780	13-0865

### Guaranteed performance equal or better than the competition!

#### Ghost Dye™ Violet 510 Cat. No. 13-0870

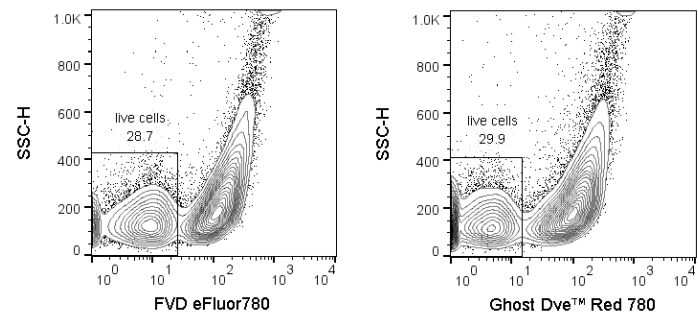
Cells: C57/Bl6 thymocytes incubated overnight at 37C



Mouse thymocytes were incubated overnight at 37°C and stained with LIVE/DEAD Aqua (left panel) or Ghost Dye™ Violet 510 (right panel).

#### Ghost Dye™ Red 780 Cat. No. 13-0871

Cells: C57/Bl6 thymocytes incubated overnight at 37C



Mouse thymocytes were incubated overnight at 37°C and stained with Fixable Viability Dye eFluor 780 (left panel) or Ghost Dye™ Red 780 (right panel).

### Intracellular dyes

#### 7-AAD (Cat. No. 13-6993)

- Ready-to-use format
- Excitation: Blue (488 nm),  
Green (532 nm),  
Yellow-Green (561 nm)
- Emission: 647 nm

#### Propidium Iodide (Cat. No. 13-6990)

- Ready-to-use format
- Excitation: Blue (488 nm),  
Green (532 nm),  
Yellow-Green (561 nm)
- Emission: 535 - 617 nm

#### CFSE (Cat. No. 13-0850)

- Ready-to-use format
- Excitation: Blue (488 nm)
- Emission: 521 nm

### Nous contacter